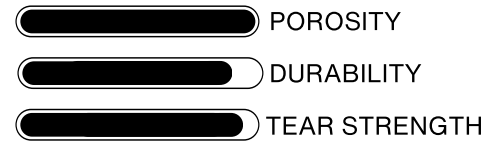




VersaRUBBER[®] ELITE



Description & Application: With the timeless allure of wood and the robustness of rubber, this flooring solution offers the best of both worlds. Beneath its captivating wooden finish lies a foundation of dual rubber layers, reinforcing its durability and versatility. Engineered for comfort with anti-fatigue properties and fortified with an anti-slip surface for safety, VersaRUBBER ELITE caters to a broad spectrum of spaces, from bustling offices and dynamic retail environments to vibrant schools and intimate home gyms. Pliteq Flooring's meticulous design ensures that VersaRUBBER ELITE not only meets but exceeds the unique requirements of each market segment.

Warranty: Pliteq Flooring warrants that VersaRUBBER ELITE, when installed according to its recommended procedures and adhesives, will be free from manufacturing defects during regular use for 10 years from the original installation date. For more information, please reach out.

TECHNICAL SPECIFICATIONS

	ASTM	1/8" (3 mm), 1/4" (6 mm), 3/8" (9 mm)
Thickness Tolerance	T6342	> ±0.25mm
Surface Sensity	T533	9.0-9.6 kg/m ³
Hardness Shore A	T531.1	80 ± 5
Tensile Strength	T528	≥ 7.5 Mpa
Tearing Strength	TT529	≥ 25
Abrasion Resistance	D3389	0.11g, 300 cycles
Wear Index	D3389	0.398
Anti-Slip Property	DIN51130	≥ R9
Brittleness Temperature	T1682	≤ -20 °C
Elongation at Break	T528	≥ 50%
Dimensional Stability	ISO 23999	≤ 0.4%
Resistance to Chemicals	ISO 26987	
Alcohol 95%		Unchanged
Sodium Hydroxide 2%		Unchanged
Hydrochloric Acid 5%		Unchanged
Tear	D624	94.52 lbf/in

PHYSICAL SPECIFICATIONS

FORMAT	PLANK
DIMENSIONS	4' (1.2 m) x 0.8' (0.25 m)
THICKNESS	1/8" (3 mm), 1/4" (6 mm), 3/8" (9 mm)
SF/ PLANK	3.2 SF (0.30 m ²)
PLANKS/BOX	
1/8" (3 mm)	16
1/4" (6 mm)	8
3/8" (9 mm)	8
WEIGHT/PLANK	
1/8" (3 mm)	3 lbs (1.4 kgs)
1/4" (6 mm)	6 lbs (2.75 kgs)
3/8" (9 mm)	9 lbs (4.15 kgs)

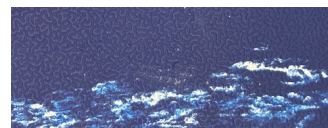
COLOR OPTIONS



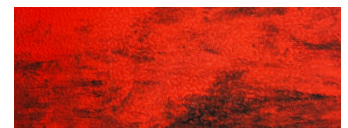
1901 VOLCANIC GREY



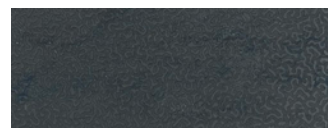
1902 VINTAGE GREY



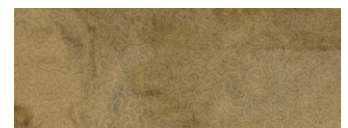
1903 VENICE BLUE



1904 VIBRANT RED



1905 VENETIAN WALNUT



1906 VANILLA BEIGE